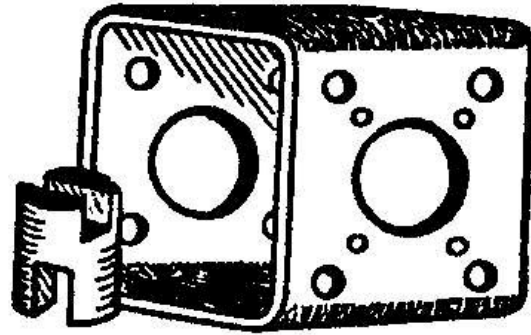


Vincent R. Nitz, *President*
James M. Leppek, *Sales & Engineering*

Phone: (989) 883-9500
Fax: (989) 883-2772
Website: www.nitzvalve.com
E-mail: nvh@nitzvalve.com

Direct e-mail:

vrnitz@nitzvalve.com
jleppek@nitzvalve.com
admin@nitzvalve.com



Nitz Valve Hardware, Inc.

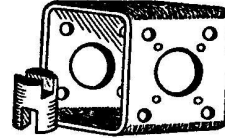
Leaders in Valve Automation Adaptation Hardware

Price List January 1, 2026

8610 Unionville Road (M-25) - P.O. Box 654 Sebawaing, MI 48759-0654

NITZ VALVE HARDWARE, INC.

Vincent R. Nitz, *President*



Memo

TO: CUSTOMERS

FROM: Vincent R. Nitz, President
NITZ VALVE HARDWARE, INC.

RE: Price list changes effective January 1, 2026

Dear customers,

We would like to note a few important changes highlighted in this price list:

1. Expedited service fees have increased for 2026. ALL expedited service orders must be approved by our sales staff prior to being sent. Nitz Valve Hardware, Inc. will not accept expedited obligations for purchase orders sent without approval. Expedited service quotes will only be honored within 7 business days of the quoted date.
2. Pre-pay and Add shipping is now only offered on standard UPS Ground and LTL freight shipments with select carriers. All other shipping methods and / or carriers will need to ship collect on your or your customers account.
3. All of the listed pricing herein covers standard ISO mount style, quarter turn applications ONLY. This means the valve is mounting to a quarter turn (90 degree) actuator and both the valve and actuator have good mounting areas meant for automation. All other valves and actuators or other combinations are POA.

8610 Unionville Road - P.O. Box 654 • Sebewaing, MI • 48759-0654
Telephone (989) 883-9500 • Fax (989) 883-2772

PRICE LIST FOR MOUNTING KITS

Product	Page
BUTTERFLY VALVES.....	4
BALL & PLUG VALVES.....	5
STEM EXTENSION KITS.....	6
3-WAY LINKAGE KITS.....	7
LIMIT SWITCHES.....	8
POSITIONERS.....	8
PART NUMBER DESIGNATION CHART.....	9
DIMENSION SPEC. SHEETS.....	10-13
SAMPLE DRAWINGS.....	14-17
DECIMAL EQUIVELENT CHART.....	18

PRICE LIST

PRICE INCLUDES

- Carbon Steel Bracket/Coupling
- Completely Deburred
- Primed
- Painted
- Fasteners

OPTIONAL SERVICES (Additional Cost)

- Stainless Steel Material POA

• EXPEDITED SERVICE PER KIT DESIGN

3 working days - \$200.00

7 working days - \$150.00

PLEASE CONTACT US FOR EXPEDITED SERVICE
AVAILABILITY.

EXPEDITED SERVICE QUOTES ARE VALID FOR SEVEN
BUSINESS DAYS.

QUANTITY DISCOUNTS ARE NOT
AVAILABLE ON EXPEDITED ORDERS

Prices shown are net - Quantity 1 - 5 pieces

Quantity Discounts per Design *

6 - 20 list price less 5%

21 - 50 list price less 10%

51 - ? list price less 15%

***QUANTITY DISCOUNTS NOT
AVAILABLE ON EXPEDITED ORDERS**

Terms

F.O.B - Sebewaing, Michigan

NOTES:

1. NITZ VALVE HARDWARE, INC. offers "Pre-pay & Add" shipments via standard ground service. All expedited shipping methods will need to ship collect on your preferred account.
2. NITZ VALVE HARDWARE, INC. is not responsible for incorrect dimensional data supplied by the customer.
3. Prices based on standard assemblies. NITZ VALVE HARDWARE, INC. reserves the right to add charges on oversized or "special" mounting configurations.
4. All mounting adapter kits not listed are "Price On Availability" (POA).

Effective January 1, 2026

MOUNTING KIT PRICE FOR ISO5211 MOUNT BUTTERFLY VALVES ONLY

Standard carbon steel mounting kit pricing

2" thru 6" valves
(1 piece) - \$132.00 net each
(2 to 5 pieces) - \$110.00 net each

8" thru 12" valves
(1 piece) - \$175.00 net each
(2 to 5 pieces) - \$153.00 net each

14" thru 20" valves
(1 piece) - \$320.00 net each
(2 to 5 pieces) - \$300.00 net each

NOTES:

- **Listed pricing is for resilient seated butterfly valves only**
- Oversized actuators due to low air pressure are POA
- All high performance valves are POA
- 24" & larger valves are POA
- Damper valves are POA
- Actuators which have blank drive nuts will have additional machining charges.
Example: Auma, Limitorque, RCEL, EIM, Rotork gears
- Actuators which have 2" or larger female drives or 1.5" or larger male drives are POA
Example: Bettis "G" series, HD series, Remote Control / Rotork RC80/100
- Lock out option can be added into most mounting kits. Contact us for more info and cost
- Two part epoxy coating available in black color only. Contact us for more info and cost

Effective January 1, 2026

MOUNTING KIT PRICE FOR ISO5211 MOUNT BALL & PLUG VALVES ONLY

Standard carbon steel mounting kit pricing

1/4" thru 1" valves
(1 piece) - \$125.00 net each
(2 to 5 pieces) - \$105.00 net each

1-1/4" thru 2" valves
(1 piece) - \$132.00 net each
(2 to 5 pieces) - \$110.00 net each

2-1/2" thru 4" valves
(1 piece) - \$205.00 net each
(2 to 5 pieces) - \$185.00 net each

6" thru 8" valves
(1 piece) - \$320.00 net each
(2 to 5 pieces) - \$300.00 net each

NOTES:

- Listed pricing is for 150# class ball or plug valves only
- Oversized actuators due to low air pressure are POA
- 300# class valves are POA
- 10" & larger valves are POA
- Actuators which have blank drive nuts will have additional machining charges.
Example: Auma, Limitorque, RCEL, EIM, Rotork gears.
- Actuators which have 2" or larger female drives or 1.5" or larger male drives are POA
Example: Bettis "G" series, HD series, Remote Control / Rotork RC80/100
- Lock out option can be added into most mounting kits. Contact us for more info and cost
- Two part epoxy coating available in black color only. Contact us for more info and cost

Effective January 1, 2026

ISO5211 MOUNT VALVE STEM EXTENSION KIT

VALVE SIZE	Up to 3' Length Face to Face	Price per Inch Over 3' Lengths
2" - 6"	\$365.00	\$6.00
8" - 12"	\$420.00	\$7.00
14" - 20"	\$625.00	\$12.20
24" - 36"	POA	POA

NOTES:

- Industrial Butterfly Valves only; Hi-performance BFV - POA
- AWWA BFV's, Plug, and Ball Valves - POA
- See example drawing on page 14

GEAR BOX HANDWHEEL STEM EXTENSION KIT

STEM DIAMETER	Up to 3' Length Pin to Pin	Price per Inch Over 3' Lengths
1/2" – 1"	\$188.00	\$2.75
LARGER DIAMETER	POA	POA

- See example drawing on page 17

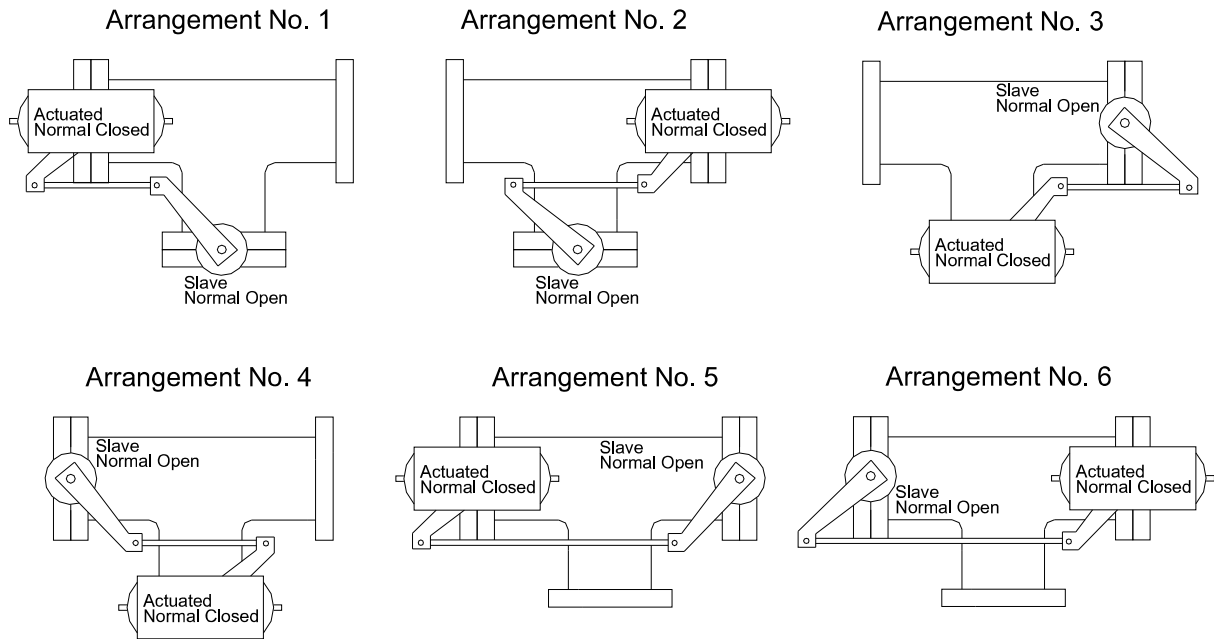
Effective January 1, 2026

ISO5211 MOUNT 3- WAY BUTTERFLY VALVE LINKAGE KITS

High Performance BFV - POA
Ball Valves, Plug Valves, & Gate Valves - POA

2" thru 6"	8" thru 12"	14" thru 18"	20" thru 36"
\$518.00	\$625.00	\$810.00	POA

*Chain Drive Design with Guard
or
Linkage Arm Design*



THE ECONOMICAL ALTERNATIVE TO EXPENSIVE BALL VALVES

NOTE:

When ordering 3-ways, valve locations and actuator location must be defined.

When ordering, specify Chain or Linkage Arm Design.

See example drawing on page 15

Effective January 1, 2026

ACCESSORIES

NON-NAMUR LIMIT SWITCH MOUNTING KITS*	Price
Mounting to Actuator	\$118.00
Lever Operated and Gear Box Mountings	POA

NON- NAMUR POSITIONER MOUNTING KITS*	Price
Accord, Bailey, Moore, PMV	\$118.00

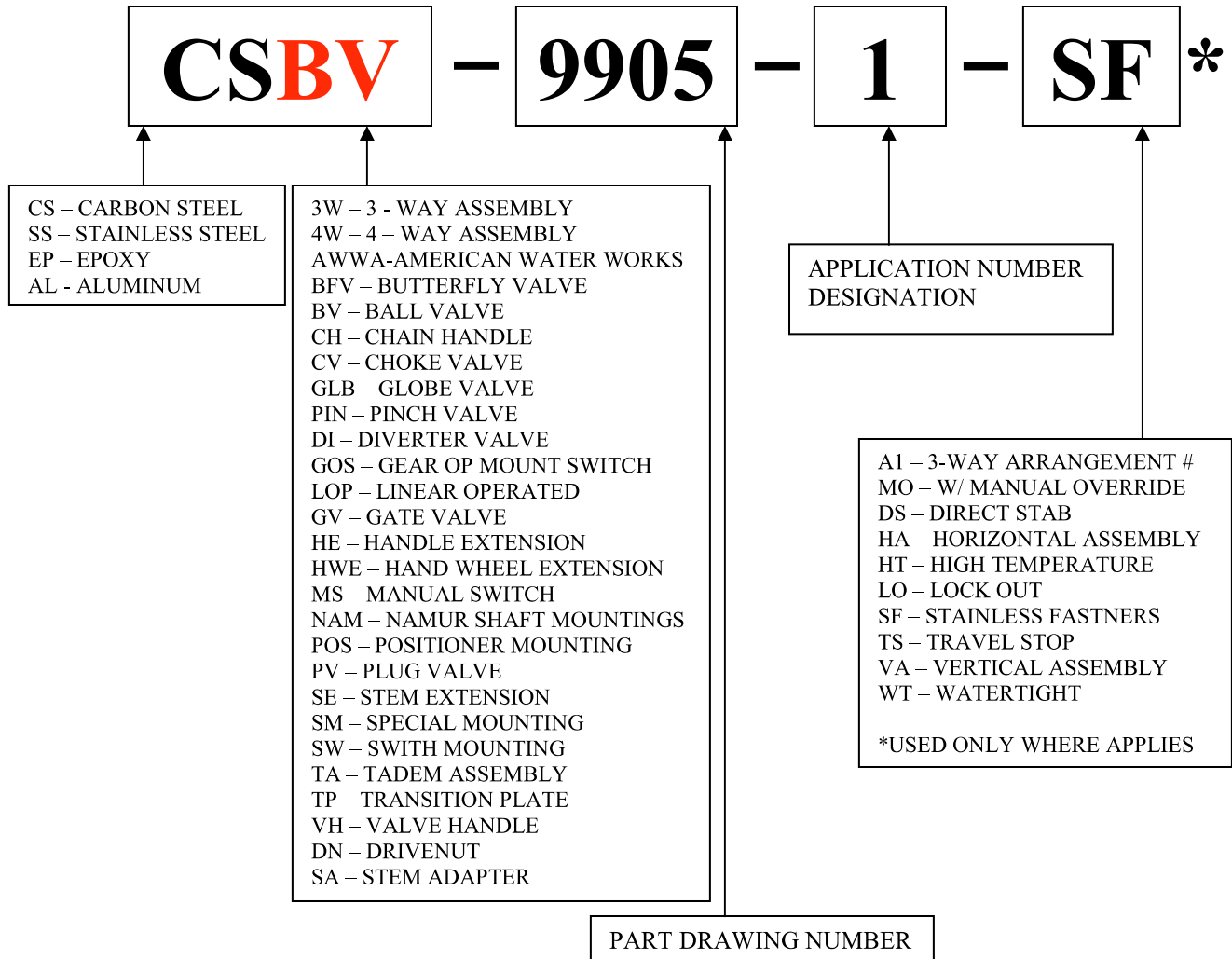
STAINLESS STEEL NAMUR BRACKET ONLY MOUNTING KITS*	Price
#1 Namur 80mm x 30mm mounting bolt hole pattern x 20mm pinion height	\$67.00**
#2 Namur 130mm x 30mm mounting bolt hole pattern x 30mm pinion height	\$67.00**
Special 80mm x 30mm mounting bolt hole pattern x 30mm pinion height	\$70.00**

**Customer must supply application description when ordering accessory mounts.*

***Special quantity discounts available. Call for quoting.*

Effective January 1, 2026

FOR REFERENCE ONLY

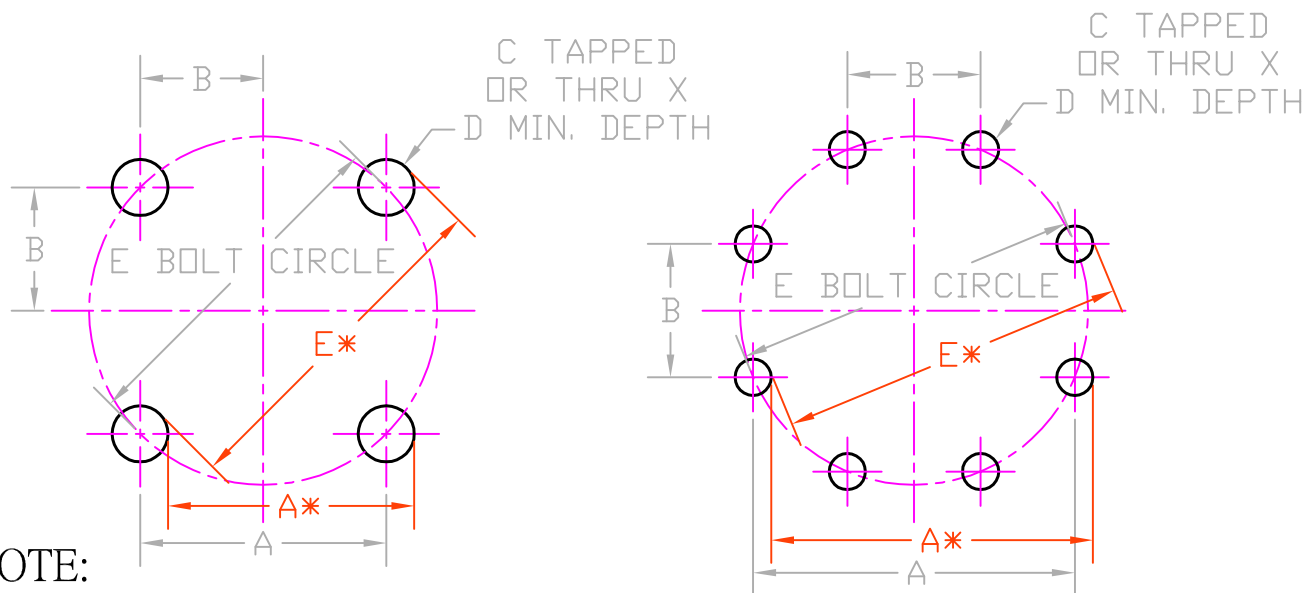


When reordering your Nitz Valve Hardware mounting kits please take note of our part number assignments. The part number will be included with the shipment of the mounting kits and should be kept record of for your reordering needs. Numbering system is subject to be revised to provide additional designations for mounting kits.

Effective January 1, 2026

ISO MOUNTING PATTERNS

ISO TYPE	DIMENSIONS					
	A	B	C	D MIN.	E DIA.	# HOLES
F03	1.002	.501	10-24 / M5	.35	1.414	4
F04	1.170	.585	10-24 / M5	.35	1.656	4
F05	1.392	.696	1/4" / M6	.35	1.97	4
F07	1.948	.974	5/16" / M8	.47	2.756	4
F10	2.840	1.420	3/8" / M10	.59	4.02	4
F12	3.480	1.740	1/2" / M12	.71	4.92	4
F14	3.898	1.949	5/8" / M16	.94	5.51	4
F16	4.593	2.296	3/4" / M20	1.18	6.50	4
F25	9.239	3.827	5/8" / M16	.94	10.0	8
F30	10.837	4.489	3/4" / M20	1.18	11.73	8
F35	12.944	5.361	VARIES	VARIES	14.01	8
F40	14.764	6.115	VARIES	VARIES	15.98	8
F48	-	-	VARIES	VARIES	19.01	12
F60	-	-	VARIES	VARIES	23.74	20



***NOTE:**

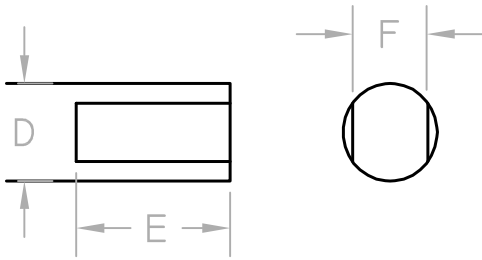
"E" & "A" ARE MOST EASILY MEASURED FROM THE EDGE OF ONE HOLE TO THE OPPOSITE EDGE ACROSS CENTERLINE AS SHOWN IN THE DRAWING ABOVE.

NVH Nitz Valve Hardware Inc.		ISO5211 STANDARD BOLT MOUNTING PATTERN DIMENSIONS			
THIS DOCUMENT AND THE DATA DISCLOSED HEREIN OR HERewith IS NOT TO BE REPRODUCED, USED, OR DISCLOSED IN WHOLE OR IN PART WITHOUT THE WRITTEN CONSENT OF NITZ VALVE HARDWARE, INC.	DRAWN BY: J. LEPEK		PART NO. -		REV -
	APPROVED BY: <i>J. Leppek</i>		SCALE 1:1	SHEET 1 OF 1	

SHAFT STYLE SHEET ONE - BUTTERFLY VALVES

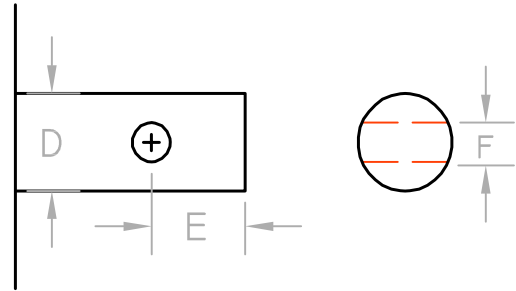
USE CALIPERS AND GIVE DIMENSIONS TO THE THIRD DECIMAL WHENEVER POSSIBLE

SHAFT STYLE 1



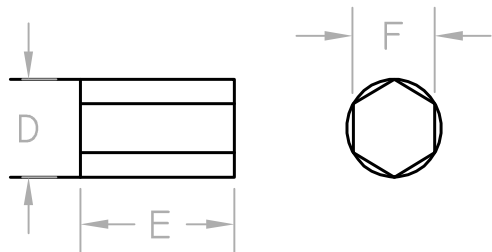
DOUBLE DEE SHAFT

SHAFT STYLE 2



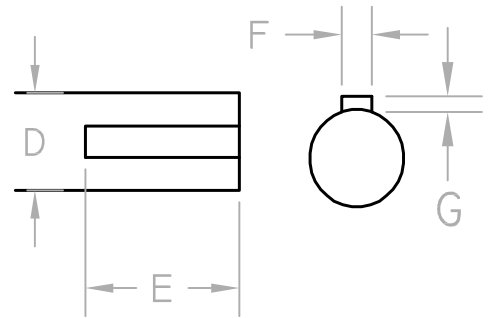
PINNED SHAFT

SHAFT STYLE 3



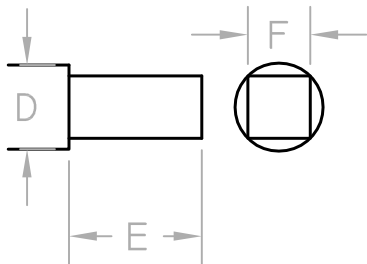
HEX SHAFT

SHAFT STYLE 4



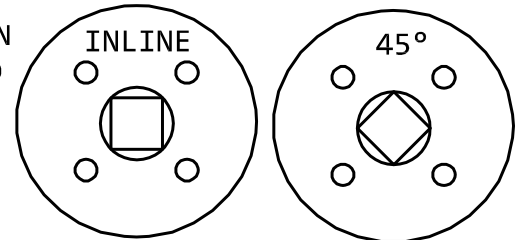
KEYED SHAFT

SHAFT STYLE 5



SQUARE

SQUARE ORIENTATION
WITH VALVE CLOSED
(CIRCLE ONE)



NVH

Nitz Valve Hardware, Inc.
8610 Unionville Road
Sebewaing, MI 48759
t: (989) 883-9500
f: (989) 883-2772

SHAFT STYLE: _____

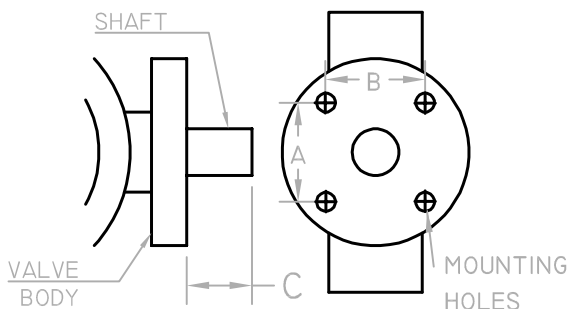
DIM D: _____ DIM F: _____

DIM E: _____ DIM G: _____

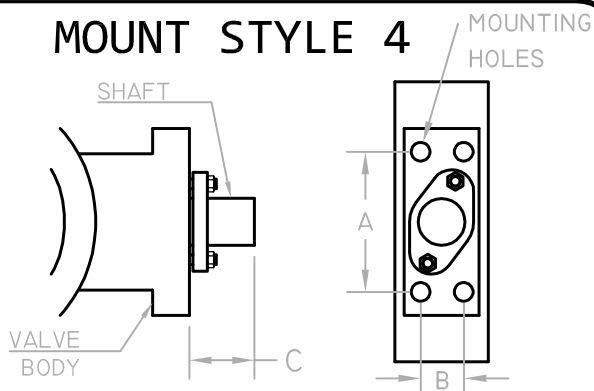
MOUNT STYLE SHEET TWO - USE SHEET ONE FOR STEM

USE CALIPERS AND GIVE DIMENSIONS TO THE THIRD DECIMAL WHENEVER POSSIBLE
SEE PAGE 10 IN OUR PRICEBOOK FOR CORRECT BOLT PATTERN MEASURING METHOD

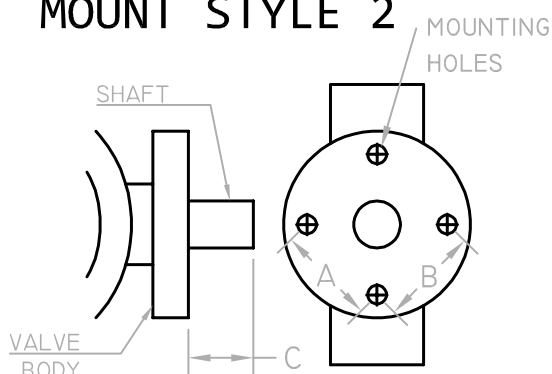
MOUNT STYLE 1



MOUNT STYLE 4



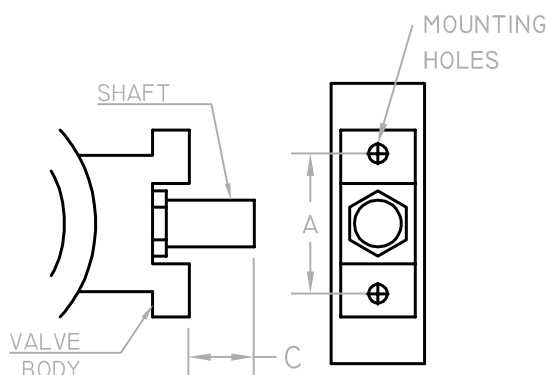
MOUNT STYLE 2



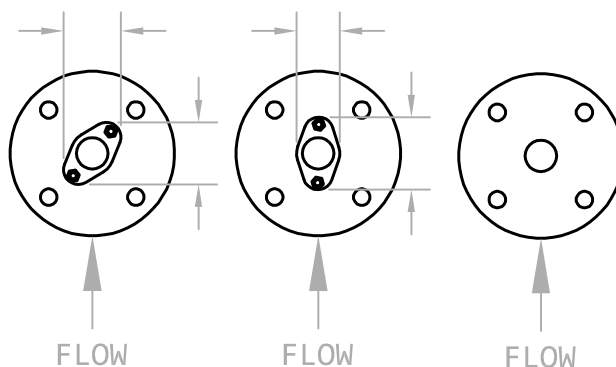
MOUNT STYLE 5

SKETCH YOUR MOUNT STYLE
USING MOUNT STYLE EXAMPLES.

MOUNT STYLE 3



CIRCLE AND DIMENSION
OR DRAW IN PACKING FOLLOWER



NVH

Nitz Valve Hardware, Inc.
8610 Unionville Road
Sebewaing, MI 48759
t: (989) 883-9500
f: (989) 883-2772

MOUNTING STYLE: _____

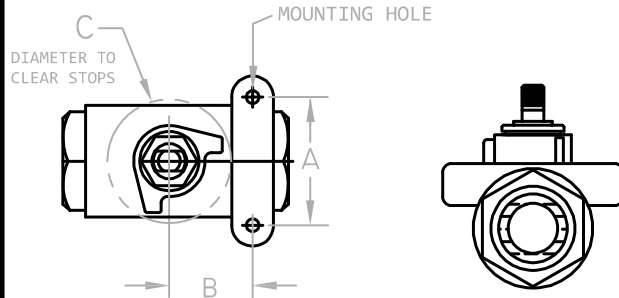
DIM A: _____ DIM B: _____ DIM C: _____

MOUNTING HOLES- DIA ϕ : THROUGH TAPPED
Ex: 0.437" Ex: $\frac{1}{2}$ "-13

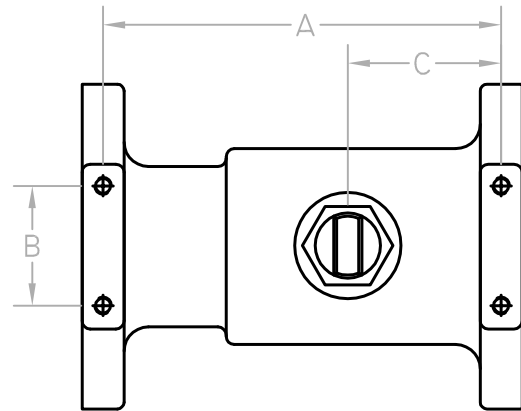
THREAD SPEC:

MOUNT STYLE SHEET THREE - USE SHEET ONE FOR STEM
 USE CALIPERS AND GIVE DIMENSIONS TO THE THIRD DECIMAL WHENEVER POSSIBLE
 SEE PAGE 10 IN OUR PRICEBOOK FOR CORRECT BOLT PATTERN MEASURING METHOD

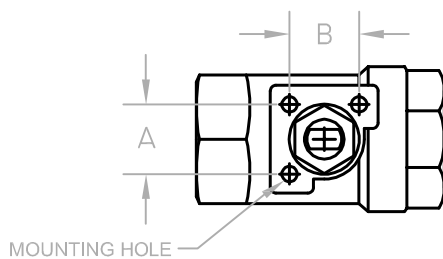
MOUNT STYLE 1



MOUNT STYLE 1



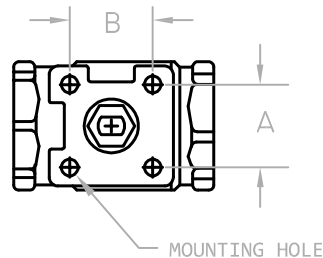
MOUNT STYLE 2



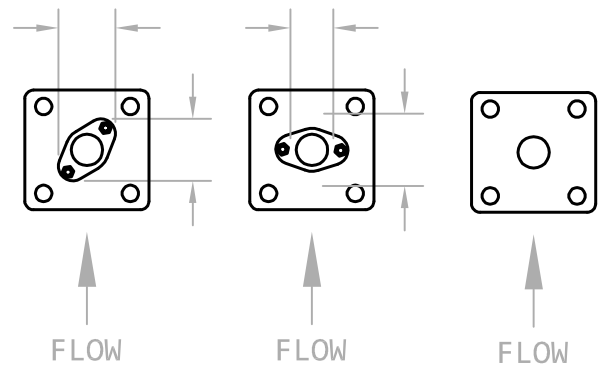
MOUNT STYLE 5

SKETCH YOUR MOUNT STYLE
 USING MOUNT STYLE EXAMPLES.

MOUNT STYLE 3



CIRCLE AND DIMENSION
 OR DRAW IN PACKING FOLLOWER



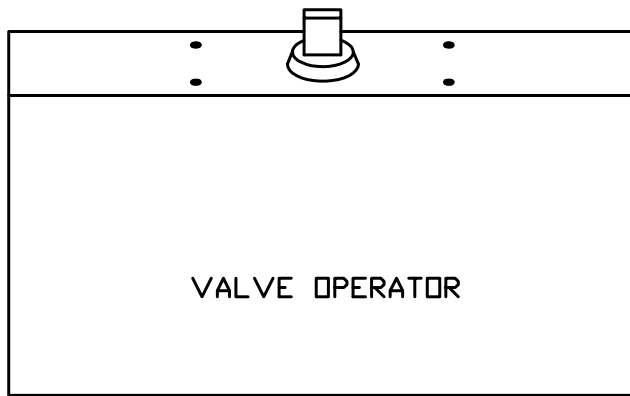
NVH

Nitz Valve Hardware, Inc.
 8610 Unionville Road
 Sebawaing, MI 48759
 t: (989) 883-9500
 f: (989) 883-2772

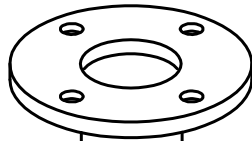
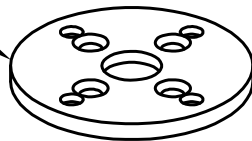
MOUNTING STYLE: _____

DIM A: _____ DIM B: _____ DIM C: _____

MOUNTING HOLES- DIA ϕ : **THROUGH** **THREAD SPEC:** **TAPPED**
 Ex: 0.437" Ex: $\frac{1}{2}$ "-13

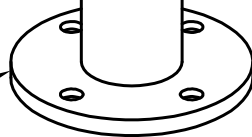


TRANSITION PLATE
WHEN REQUIRED

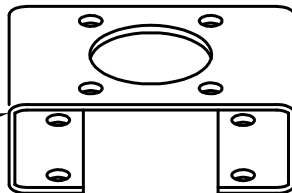


NOTE:
TOP OF STEM EXTENSIONS WILL NORMALLY
DUPLICATE THE VALVE MOUNTING PAD.
A BRACKET WILL BE REQUIRED UNDER
THE EXTENSION FOR PACKING GLAND
OR WHEN OTHER CLEARANCE ISSUES APPLY.
A TRANSITION PLATE WILL BE REQUIRED
ON THE EXTENSION WHEN PIPE O.D.
EXCEEDS THE BOLT PATTERN ON
EITHER THE TOP, BOTTOM, OR BOTH.
THRUST BEARINGS ARE RECOMMENDED
FOR HEAVY OR LONG INNER DRIVES.
ACTUATOR SHOWN FOR REFERENCE ONLY.

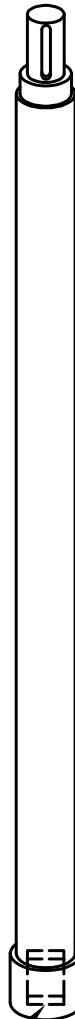
PLATE TO
MOUNT TO
VALVE



ADAPTER BRACKET
WHEN REQUIRED



STEM ADAPTER

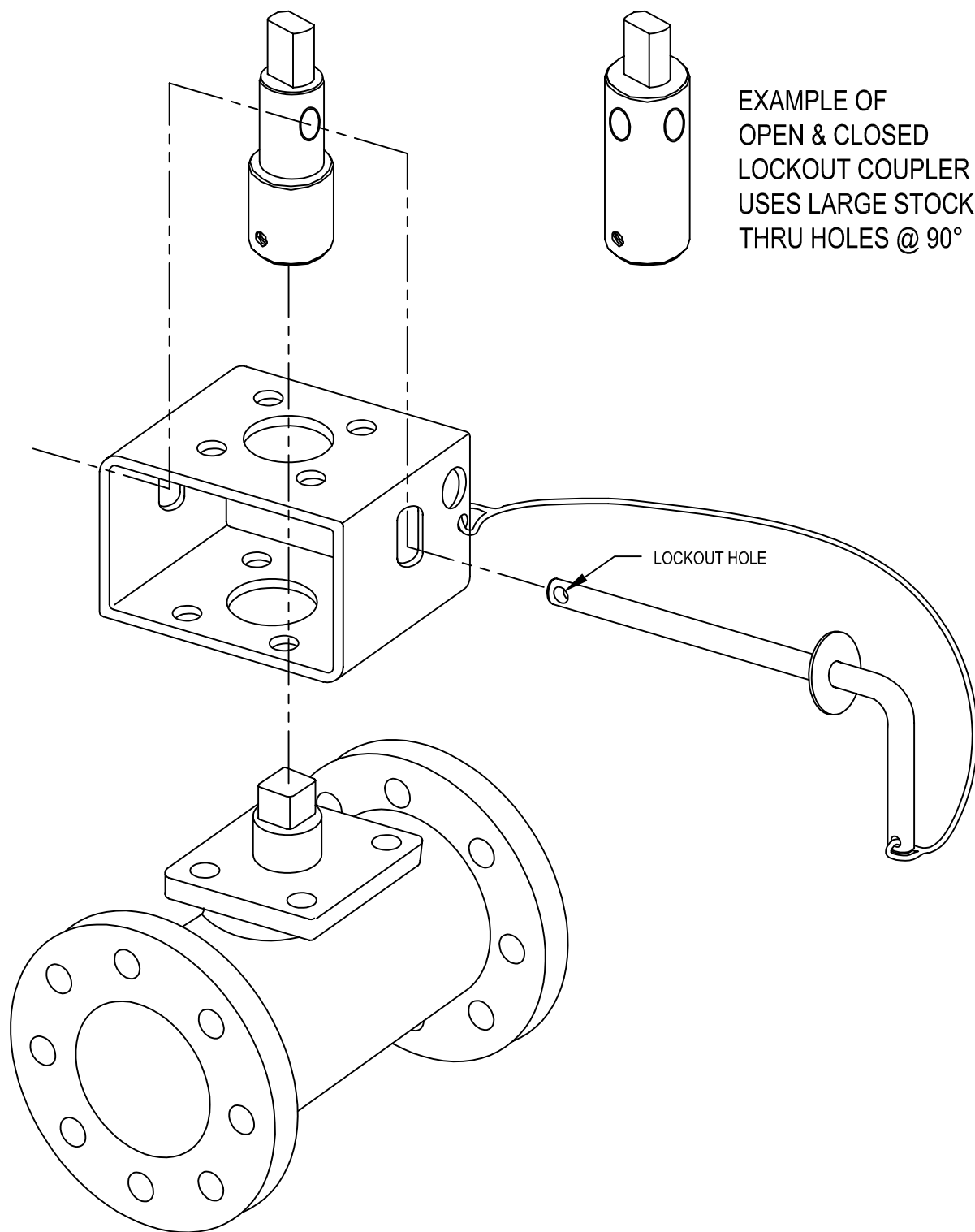


INNER
DRIVE
SHAFT



THRUST BEARING
WHEN REQUIRED

<div> <div>REV</div> <div>DESCRIPTION</div> <div>DATE</div> <div>APP'D</div> </div>	<div> <div>NVH Nitz Valve Hardware Inc.</div> <div> <div>THIS DOCUMENT AND THE DATA DISCLOSED HEREIN OR HEREWITH IS NOT TO BE REPRODUCED, USED, OR DISCLOSED IN WHOLE OR IN PART WITHOUT THE WRITTEN CONSENT OF NITZ VALVE HARDWARE, INC.</div> <div> <div>DRAWN BY: J. LEPPEK</div> <div>APPROVED BY: <i>J. Leppek</i></div> </div> </div> </div>	<div> <div>STEM EXTENSION MOUNTING LINKAGE STYLES</div> <div> <div>PART NO. -</div> <div>SCALE 1:1</div> <div>SHEET 1 OF 1</div> </div> <div> <div>REV -</div> </div> </div>
---	--	--



REV	DESCRIPTION	DATE	APPROVED

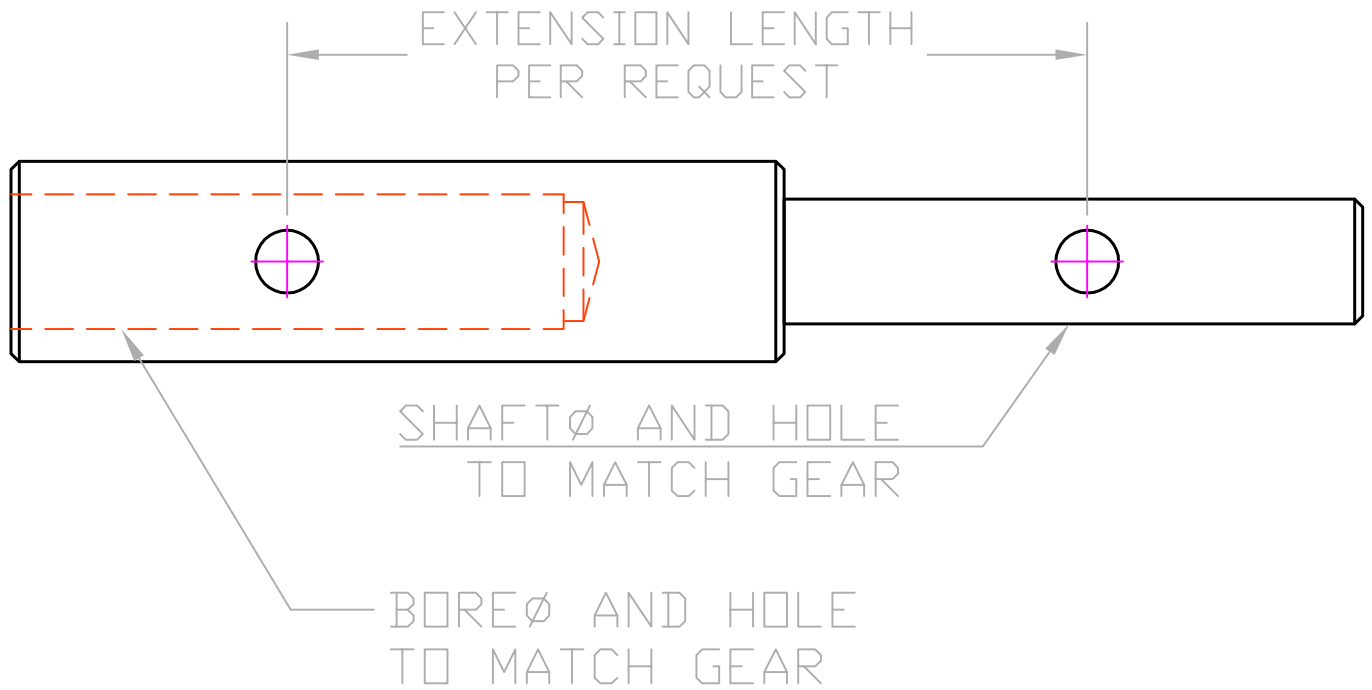
NVH Nitz Valve Hardware Inc.

STEM EXTENSION MOUNTING LINKAGE STYLES

THIS DOCUMENT AND THE DATA DISCLOSED HEREIN OR
HEREWITH IS NOT TO BE REPRODUCED, USED, OR
DISCLOSED IN WHOLE OR IN PART WITHOUT THE WRITTEN
CONSENT OF NITZ VALVE HARDWARE, INC.

DRAWN BY: J. LEPPER
APPROVED BY: *J. LEPPER*

PART NO.	-	REV	-
SCALE	1:1	SHEET	1 OF 1



AVAILABLE IN CARBON AND STAINLESS STEELS
CALL FOR AVAILABLE LENGTHS
1 - SPRING ROLL PIN INCLUDED

--	--	--	--	--	--	--	--	--	--	--	--	--	--	--	--	--	--	--	--	--	--	--	--	--	--	--	--	--	--	--	--	--	--	--	--	--	--	--	--	--	--	--	--	--	--	--	--	--	--	--	--	--	--	--	--	--	--	--	--	--	--	--	--	--	--	--	--	--	--	--	--	--	--	--	--	--	--	--	--	--	--	--	--	--	--	--	--	--	--	--	--	--	--	--	--	--	--	--	--	--	--	--	--	--	--	--	--	--	--	--	--	--	--	--	--	--	--	--	--	--	--	--	--	--	--	--	--	--	--	--	--	--	--	--	--	--	--	--	--	--	--	--	--	--	--	--	--	--	--	--	--	--	--	--	--	--	--	--	--	--	--	--	--	--	--	--	--	--	--	--	--	--	--	--	--	--	--	--	--	--	--	--	--	--	--	--	--	--	--	--	--	--	--	--	--	--	--	--	--	--	--	--	--	--	--	--	--	--	--	--	--	--	--	--	--	--	--	--	--	--	--	--	--	--	--	--	--	--	--	--	--	--	--	--	--	--	--	--	--	--	--	--	--	--	--	--	--	--	--	--	--	--	--	--	--	--	--	--	--	--	--	--	--	--	--	--	--	--	--	--	--	--	--	--	--	--	--	--	--	--	--	--	--	--	--	--	--	--	--	--	--	--	--	--	--	--	--	--	--	--	--	--	--	--	--	--	--	--	--	--	--	--	--	--	--	--	--	--	--	--	--	--	--	--	--	--	--	--	--	--	--	--	--	--	--	--	--	--	--	--	--	--	--	--	--	--	--	--	--	--	--	--	--	--	--	--	--	--	--	--	--	--	--	--	--	--	--	--	--	--	--	--	--	--	--	--	--	--	--	--	--	--	--	--	--	--	--	--	--	--	--	--	--	--	--	--	--	--	--	--	--	--	--	--	--	--	--	--	--	--	--	--	--	--	--	--	--	--	--	--	--	--	--	--	--	--	--	--	--	--	--	--	--	--	--	--	--	--	--	--	--	--	--	--	--	--	--	--	--	--	--	--	--	--	--	--	--	--	--	--	--	--	--	--	--	--	--	--	--	--	--	--	--	--	--	--	--	--	--	--	--	--	--	--	--	--	--	--	--	--	--	--	--	--	--	--	--	--	--	--	--	--	--	--	--	--	--	--	--	--	--	--	--	--	--	--	--	--	--	--	--	--	--	--	--	--	--	--	--	--	--	--	--	--	--	--	--	--	--	--	--	--	--	--	--	--	--	--	--	--	--	--	--	--	--	--	--	--	--	--	--	--	--	--	--	--	--	--	--	--	--	--	--	--	--	--	--	--	--	--	--	--	--	--	--	--	--	--	--	--	--	--	--	--	--	--	--	--	--	--	--	--	--	--	--	--	--	--	--	--	--	--	--	--	--	--	--	--	--	--	--	--	--	--	--	--	--	--	--	--	--	--	--	--	--	--	--	--	--	--	--	--	--	--	--	--	--	--	--	--	--	--	--	--	--	--	--	--	--	--	--	--	--	--	--	--	--	--	--	--	--	--	--	--	--	--	--	--	--	--	--	--	--	--	--	--	--	--	--	--	--	--	--	--	--	--	--	--	--	--	--	--	--	--	--	--	--	--	--	--	--	--	--	--	--	--	--	--	--	--	--	--	--	--	--	--	--	--	--	--	--	--	--	--	--	--	--	--	--	--	--	--	--	--	--	--	--	--	--	--	--	--	--	--	--	--	--	--	--	--	--	--	--	--	--	--	--	--	--	--	--	--	--	--	--	--	--	--	--	--	--	--	--	--	--	--	--	--	--	--	--	--	--	--	--	--	--	--	--	--	--	--	--	--	--	--	--	--	--	--	--	--	--	--	--	--	--	--	--	--	--	--	--	--	--	--	--	--	--	--	--	--	--	--	--	--	--	--	--	--	--	--	--	--	--	--	--	--	--	--	--	--	--	--	--	--	--	--	--	--	--	--	--	--	--	--	--	--	--	--	--	--	--	--	--	--	--	--	--	--	--	--	--	--	--	--	--	--	--	--	--	--	--	--	--	--	--	--	--	--	--	--	--	--	--	--	--	--	--	--	--	--	--	--	--	--	--	--	--	--	--	--	--	--	--	--	--	--	--	--	--	--	--	--	--	--	--	--	--	--	--	--	--	--	--	--	--	--	--	--	--	--	--	--	--	--	--	--	--	--	--	--	--	--	--	--	--	--	--	--	--	--	--	--	--	--	--	--	--	--	--	--	--	--	--	--	--	--	--	--	--	--	--	--	--	--	--	--	--	--	--	--	--	--	--	--	--	--	--	--	--	--	--	--	--	--	--	--	--	--	--	--	--	--	--	--	--	--	--	--	--	--	--	--	--	--	--	--	--	--	--	--	--	--	--	--	--	--	--	--	--	--	--	--	--	--	--	--	--	--	--	--	--	--	--	--	--	--	--	--	--	--	--	--	--	--	--	--	--	--	--	--	--	--	--	--	--	--	--	--	--	--	--	--	--	--	--	--	--	--	--	--	--	--	--	--	--	--	--	--	--	--	--	--	--	--	--	--	--	--	--	--	--	--	--	--	--	--	--	--	--	--	--	--	--	--	--	--	--	--	--	--	--	--	--	--	--	--	--	--	--	--	--	--	--	--	--	--	--	--	--	--	--	--	--	--	--	--	--	--	--	--	--	--	--	--	--	--	--	--	--	--	--	--	--	--	--	--	--	--	--	--	--	--	--	--	--	--	--	--	--	--	--	--	--	--	--	--	--	--	--	--	--	--	--	--	--	--	--	--	--	--	--	--	--	--	--	--	--	--	--	--	--	--	--	--	--	--	--	--	--	--	--	--	--	--	--	--	--	--	--	--	--	--	--	--	--	--	--	--	--	--	--	--	--	--	--	--	--	--	--	--	--	--	--	--	--	--	--	--	--	--	--	--	--	--	--	--	--	--	--	--	--	--	--	--	--	--	--	--	--	--	--	--	--	--	--	--	--	--	--	--	--	--	--	--	--	--	--	--	--	--	--	--	--	--	--	--	--	--	--	--	--	--	--	--	--	--	--	--	--	--	--	--	--	--	--	--	--	--	--	--	--	--	--	--	--	--	--	--	--	--	--	--	--	--	--	--	--	--	--	--	--	--	--	--	--	--	--	--	--	--	--	--	--	--	--	--	--	--	--	--	--	--	--	--	--	--	--	--	--	--	--	--	--	--	--	--	--	--	--	--	--	--	--	--	--	--	--	--	--	--	--	--	--	--	--	--	--	--	--	--	--	--	--	--	--	--	--	--	--	--	--	--	--	--	--	--	--	--	--	--	--	--	--	--	--	--	--	--	--	--	--	--	--	--	--	--	--	--	--	--	--	--	--	--	--	--	--	--	--	--	--	--	--	--	--	--	--	--	--	--	--	--	--	--	--	--	--	--	--	--	--	--	--	--	--	--	--	--	--	--	--	--	--	--	--	--	--	--	--	--	--	--	--	--	--	--	--	--	--	--	--	--	--	--	--	--	--	--	--	--	--	--	--	--	--	--	--	--	--	--	--	--	--	--	--	--	--	--	--	--	--	--	--	--	--	--	--	--	--	--	--	--	--	--	--	--	--	--	--	--	--	--	--	--	--	--	--	--	--	--	--	--	--	--	--	--	--	--	--	--	--	--	--	--	--	--	--	--	--	--	--	--	--	--	--	--	--	--	--	--	--	--	--	--	--	--	--	--	--	--	--	--	--	--	--	--	--	--	--	--	--	--	--	--	--	--	--	--	--	--	--	--	--	--	--	--	--	--	--	--	--	--	--

[illegible]

Fraction Decimal Metric Measurement Conversion Chart

Fraction	Decimal	mm
1/64"	0.015625	0.3969
1/32"	0.031250	0.7938
	0.039370	1mm
3/64"	0.046875	1.1906
1/16"	0.062500	1.5875
5/64"	0.078125	1.9844
	0.078740	2mm
3/32"	0.093750	2.3813
7/64"	0.109375	2.7781
	0.118110	3mm
1/8"	0.125000	3.1750
9/64"	0.140625	3.5719
5/32"	0.156250	3.9688
	0.157480	4mm
11/64"	0.171875	4.3656
3/16"	0.187500	4.7625
	0.196850	5mm
13/64"	0.203125	5.1594
7/32"	0.218750	5.5563
15/64"	0.234375	5.9531
	0.236220	6mm
1/4"	0.250000	6.3500
17/64"	0.265625	6.7469
	0.275591	7mm
9/32"	0.281250	7.1438
19/64"	0.296875	7.5406
5/16"	0.312500	7.9375
	0.314961	8mm
21/64"	0.328125	8.3344
11/32"	0.343750	8.7313
	0.354331	9mm
23/64"	0.359375	9.1281
3/8"	0.375000	9.5250
25/64"	0.390625	9.9219
	0.393701	10mm
13/32"	0.406250	10.3188
27/64"	0.421875	10.7156
	0.433071	11mm
7/16"	0.437500	11.1125
29/64"	0.453125	11.5094
15/32"	0.468750	11.9063
	0.472441	12mm
31/64"	0.484375	12.3031
1/2"	0.500000	12.7000
	0.511811	13mm

Fraction	Decimal	mm
33/64"	0.515625	13.0969
17/32"	0.531250	13.4938
35/64"	0.546875	13.8906
	0.551181	14mm
9/16"	0.562500	14.2875
37/64"	0.578125	14.6844
	0.590551	15mm
19/32"	0.593750	15.0813
39/64"	0.609375	15.4781
5/8"	0.625000	15.8750
	0.629921	16mm
41/64"	0.640625	16.2719
21/32"	0.656250	16.6688
	0.669291	17mm
43/64"	0.671875	17.0656
11/16"	0.687500	17.4625
45/64"	0.703125	17.8594
	0.708661	18mm
23/32"	0.718750	18.2563
47/64"	0.734375	18.6531
	0.748031	19mm
3/4"	0.750000	19.0500
49/64"	0.765625	19.4469
25/32"	0.781250	19.8438
	0.787402	20mm
51/64"	0.796875	20.2406
13/16"	0.812500	20.6375
	0.826772	21mm
53/64"	0.828125	21.0344
27/32"	0.843750	21.4313
55/64"	0.859375	21.8281
	0.866142	22mm
7/8"	0.875000	22.2250
57/64"	0.890625	22.6219
	0.905512	23mm
29/32"	0.906250	23.0188
59/64"	0.921875	23.4156
15/16"	0.937500	23.8125
	0.944882	24mm
61/64"	0.953125	24.2094
31/32"	0.968750	24.6063
	0.984252	25mm
63/64"	0.984375	25.0031
1"	1.000000	25.4000
65/64"	1.015625	25.7969

